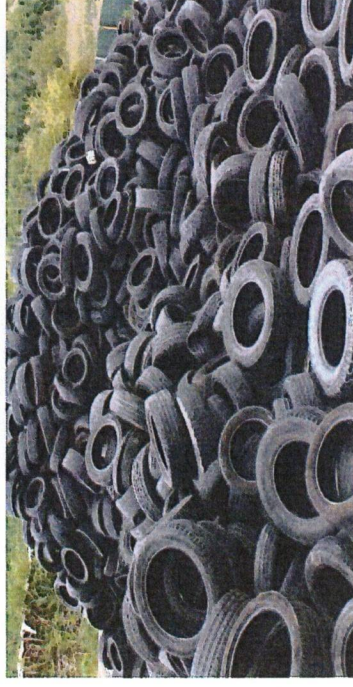


Taylor County Recycling Authority

2024

“OLD TIRE” COLLECTION



The Recycling Authority will collect “old tires” on the following dates:

August 10 - Gilman Highway Dept.
Medford Highway Dept.

August 17 - Town of Holway

Collection Time: **8:00 AM to 12:00 NOON** at all sites.

~~~ **See FEES on back** ~~~

Location Addresses:

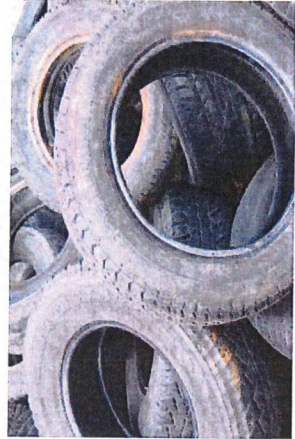
Medford Highway Dept – 208 N Eighth St, Medford WI (enter off Bauer Dr)  
Gilman Highway Dept -- W14343 Babbit Ave, Gilman WI  
Holway Town Hall -- W8581 County Rd A, Curtiss WI

| Tire Size                                                             | Cost |
|-----------------------------------------------------------------------|------|
| <b>UP to 22”</b> (car/SUV/pick-up)                                    | \$5  |
| <b>23” - 24”</b> (semi tires)                                         | \$20 |
| <b>24” – 30”</b> (front tractor)                                      | \$25 |
| <b>OVER 30”</b> (skidder, grader, endloader, back tractor tire, etc.) | \$60 |

**NO FREE TIRES &  
NO RIMS ACCEPTED**

Contributing Members:

Browning, Chelsea, Cleveland, Deer Creek, Ford, Goodrich, Grover, Hammel, Holway, Jump River, Little Black, Maplehurst, McKinley, Pershing, Roosevelt, Taft, Village of Lublin, and Village of Stetsonville.



Questions??

Call (715) 748-1485